

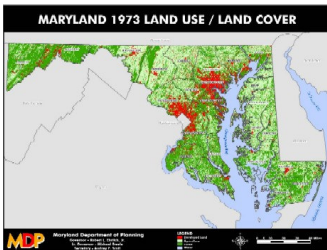
Sassafras Update

Sassafras River Association
PO Box 333
Georgetown, MD 21930

October 2006

“Planning 101 -- The State Perspective”

Two slides from Rich Hall’s October 10 presentation tell the story. The first shows land use in Maryland in 1973; the areas in red are “Developed Land.”



The second slide shows the same data for 2002. The change is dramatic:



While the rate and density of development on the Eastern Shore have been far less than on the Western

Shore, an examination of the two charts shows “hot spots” on our side of the Bay Bridge. And anyone who has driven through Queen Anne’s County or Middletown, Delaware knows that development pressures on the Eastern Shore are real.

Rich, from the Maryland Department of Planning, set the background for our consideration of watershed land use planning. He gave us the “big picture” of the planning process from the State perspective, explaining the requirements that the State of Maryland places on the Counties for their planning and zoning activities.

It is clear that we — as Eastern Shore residents, as voters, and as citizen activists — have to make some hard decisions. We can choose the way in which we will accommodate future growth, and those choices

will have a tremendous effect on what the land use slide will look like in 2012 or 2022.

Planning 102 — the Local Perspective

At our next meeting, on November 8 at the Granary Restaurant at 7 pm, we’ll hear the “other half” of the planning story.

Gail Owings, Kent County Planning Director and Eric Sennstrom, her Cecil County counterpart, will join us for a discussion of the way in which the State requirements translate into County Comprehensive Plans and Zoning Ordinances.

Our goal is to begin to learn how we, as an Association, can be most effective in promoting land use policies that will protect our watershed and our River.

Committees Offer New Volunteer Opportunities!

The SRA Board just finished a strategic planning session to focus our activities for the next several years. To increase our effectiveness and get more members involved, we’re committed to setting up an effective committee structure.

We’re looking for volunteers to staff (or lead!) our program committees:

- Education and Outreach
- Science
- Advocacy
- Membership
- Publicity

We’ll be reaching out to you, but if there’s something that interests you, email us at mail@sassafrasriver.org.

The Blob!



No, it’s not a Halloween horror film star — though it probably could be!

We found this object — and about half a dozen of its

companions — on a Swantown Creek dock in the upper Sassafras.

A check with our friend Celia Dawson at the Department of Natural Resources revealed that it’s *Pectinatella magnifica*, the only fresh water bryozoan.

Bryozoans (all the other species of which are found in salt water environments)

are a group with a fossil record extending back to the upper Cambrian period — half a billion years ago!

While “the blob” was new to us, Wickes Westcott says he’s seen them for years. We’re still trying to determine whether the bryozoan’s existence here says anything about Sassafras River water quality.

Membership News

We’re at 150 current memberships now, representing more than 250 people!

Your SRA membership lasts for one year. We’ll contact you on your anniversary date to remind you to renew. **If you’re not a current member**, visit www.sassafrasriver.org and download a membership form today.